

# ICE BATH CHILLER USER MANUAL

# *ICE BATH CHILLER USER MANUAL*



# ICE BATH CHILLER USER MANUAL



## ⚠ CAUTION -(Possible injury or property damage)

- Do not install the chiller in closets, cabinets, or other small places.
- Never cover the intake or exhaust openings with clothes, towels, or other objects.
- Use extreme caution when operating near children, the elderly or infirm.
- Never insert fingers or foreign objects into the ventilation grilles or other parts of the chiller.
- Do not place heavy objects on the power cord or run it under carpets or rugs.
- Do not climb, sit, or stand on the chiller, or place objects on top of it.
- The operators of the chiller must be at least 18 years old.

Note: At present, Tuya can only support 2.4G WiFi signal. Therefore, before connecting the phone to the chiller, please confirm that the WiFi used by your phone is in the 2.4G frequency band. It will not be able to connect to the chiller, if it is in the 5G frequency band.



No further notice will be given, if the product function is upgraded. Contact us for the latest information.





Main Technical Data Sheet

Product Name	Ice Bath Machine Parameters	
Model No.	QG-0.5HP-110V	QG-0.5HP-220V
Input power supply	110-115V 60Hz	220-240V 50Hz
Input power	580W	695W
current	5.3A	3.2A
Compressor power	395W	410W
Cooling capacity	1200W	1200W
Usage environment	2-45°C	2-45°C
Refrigerant	R32	R32
net weight	22KG	22KG
Water Volume & Cooling Time (33°C to 3°C)	120L≥4.5h (Ambient Temperature 20°C)	250L≥8h (Ambient Temperature 20°C)
Product Size	375×300×345mm	
Package size	440×380×460mm	

Standard Machine and Accessories



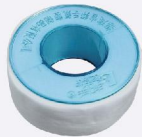
Rubber Seals



Water Pipes



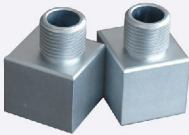
Adapter



PTFE Tape



Ice Bath Chiller



Quick Conectors



Filter

## Quick Start Guide

### Before You Begin:

- Inspect the water hoses and accessories.
- Check for O-rings at both ends of the water hoses. If missing, locate them in the accessory kit and install them.

### Connecting the Chiller & Tub:

- Prepare the Tub & Accessories:
  - ✧ Your tub should either be empty for chiller setup or the water ports should be isolated with a valve.
  - ✧ Use PTFE tape to create water tight seals by wrapping it around any male threaded connections.
- Install the adapters in the tub's water ports.
- Install the strainer at the water inlet of the chiller.
- Connect one water hose to the tub's inlet and the chiller's outlet.
- Connect the second water hose to the tub's outlet and the chiller's inlet.
- Final Check: Ensure all connections are secure. Check that the hoses are not kinked or pinched to ensure proper water flow and to prevent chiller alarms.



### Fill the Tub:

- Before running or testing the chiller, fill the tub with fresh water until the water is above both the water inlet and outlet ports. If using isolation valves, open the valves now. Water should be able to freely flow into the hoses and up to the chiller.

### Test the Chiller:

- Plug the chiller in. Before turning it on, press the test button. This is used to test whether the circuit breaker's leakage protection is working properly. After pressing the test button, the circuit breaker will simulate leakage in the circuit, the device will trip, and the light will go out. After it trips, press the reset button.

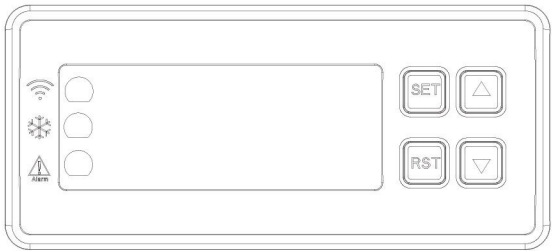


# Control Panel and Operation Instructions

## 1 Panel diagram

After the controller is powered on, the software version number (001/Fxx) is displayed in the first second, and the temperature value is displayed after the countdown is completed.

If the "E1" fault is reported during the power-on countdown, press the < Set > key and hear the buzzer sound once and the screen displays "God". The initialization is completed and the control board can resume normal operation after powering on again.



## 2 Modify the set temperature

After the power-on countdown, press <up> or <down> key under non-fault state, the screen flashes to show the set temperature, at this time, you can press <up> or <down> key to modify the set temperature value, 3 seconds without key press to save and return to display the current temperature automatically.

	Setting range	factory value	Temperature Units	Remark
Refrigeration set temperature	【F3】 ~ 【F4】	3.0℃	℃	/

## 3 Panel Operation

Number and Name Description		Function
1	Display window	Display current temperature (without decimal point), set temperature (with decimal point), fault code (Ex)
2	Wifi Indicator	Off: Wi-Fi is initializing or the Wi-Fi module is faulty; Fast flashing (2Hz): Wi-Fi is in network configuration; Slow flashing (0.5Hz): Network configuration is completed but not yet connected to the router or cloud platform; Still on: Connected to the cloud platform
3	Cooling indicator light	Flashing: The unit is started; On: The compressor is on; Off: The unit is not started
4	Fault indicator light	Comes on when a fault occurs.
5	Set	The parameter setting interface is used to enter the parameter value setting;The main interface is used to turn on/off the unit
6	Up	The parameter setting interface is used to switch parameter numbers; the main interface modifies the set temperature and automatically returns and saves after 3 seconds.
7	Down	The parameter setting interface is used to switch parameter numbers; the main interface modifies the set temperature and automatically returns and saves after 3 seconds.

Number and Name Description		Function
8	Rst	The parameter setting interface is used to exit and save parameters
9	Press the Up + Down keys for 3 seconds	Enter the parameter setting interface
10	Set + Up	The parameter value setting interface is used to modify the value
11	Set + Down	Comes on when a fault occurs
12	Set + Rst	Reset WiFi

The Wi-Fi reset function is required in the following situations:

1) Due to the unstable Wi-Fi environment, it may happen that the device is not added successfully but the Wi-Fi network configuration has been completed. At this time, it is necessary to reset the Wi-Fi and add the network configuration again;

2) After device transfer (change of device owner), the device will be automatically deleted after Wi-Fi reset.

#### 4 Download APP

Use your mobile phone to scan the QR code to download the APP, complete registration and log in. Also allow all access to this app for the best experience.



#### 5 Mobile phone connection Wi-Fi

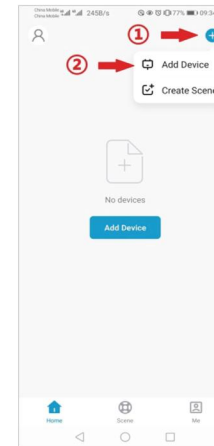
Make sure that the mobile phone and the device to be connected are in the same Wi-Fi environment. Select the 2.4GHz Wi-Fi network on the mobile phone and enter the password to connect the mobile phone to Wi-Fi.

#### 6 Add Device

1) Turn on the mobile phone Wi-Fi and Bluetooth, and enable location access, please make sure that the mobile phone Wi-Fi and Bluetooth are both turned on to obtain the best network configuration test;

2) Open the "Huilian smart" APP, on the mobile phone, and select "Home" in the bottom navigation bar;

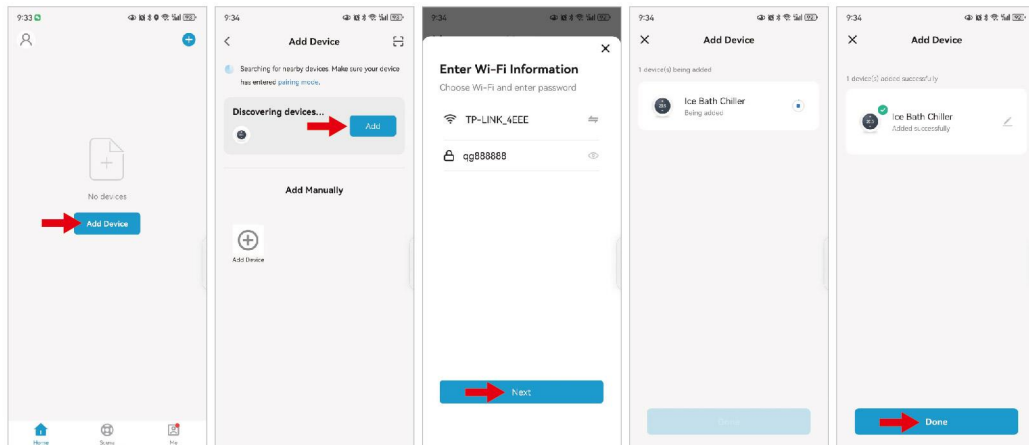
3) Click the "+" button in the upper right corner of the home page, or click the "Add Device" button in the center of the home page to enter the device adding interface;



4) In the device adding interface, please try to add the device in one of the following ways;

## A、 Automatic device discovery

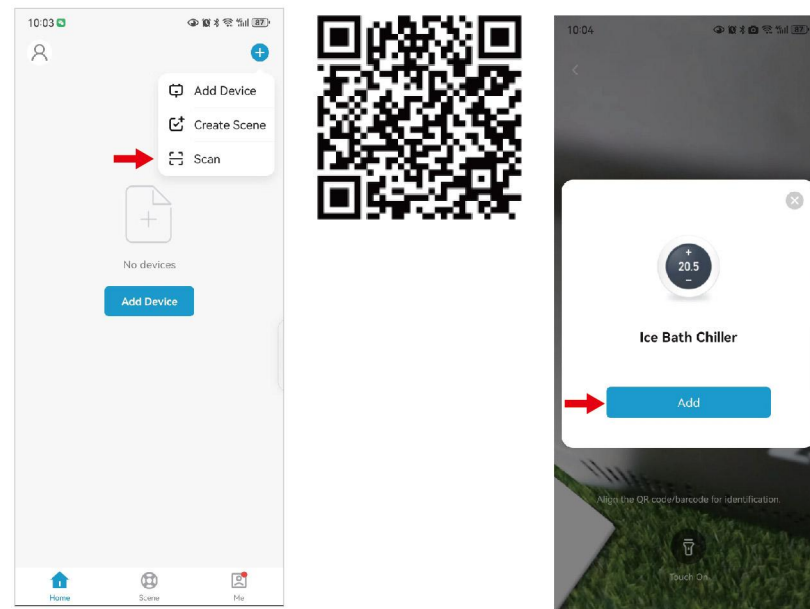
The phone will automatically discover available devices nearby. After discovering the device, follow the instructions in the figure below to complete the subsequent network configuration operations.



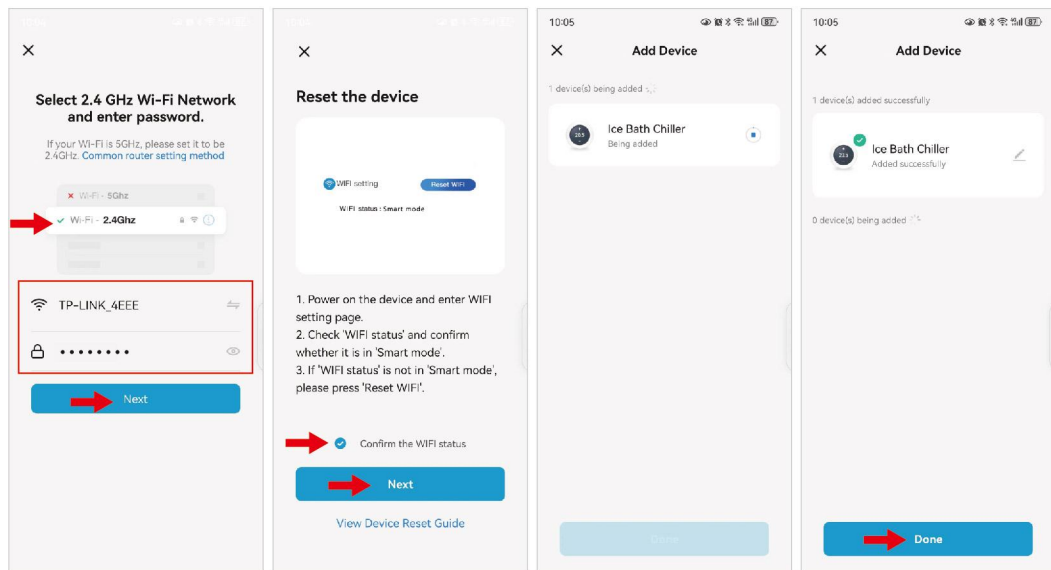
## B、 Scan Code to Configure Network

Click the "Scan" icon in the upper right corner of the device adding interface, put the device network QR code into the box to automatically scan, and follow the steps below to complete the device adding operation.

**\*Note 1:** If you have checked and confirmed that the WiFi status of the device is correct, under the step of "Reset the device", please directly check "Confirm the WiFi status" and click the "Next" button to directly configure the network without the need to reset the device.

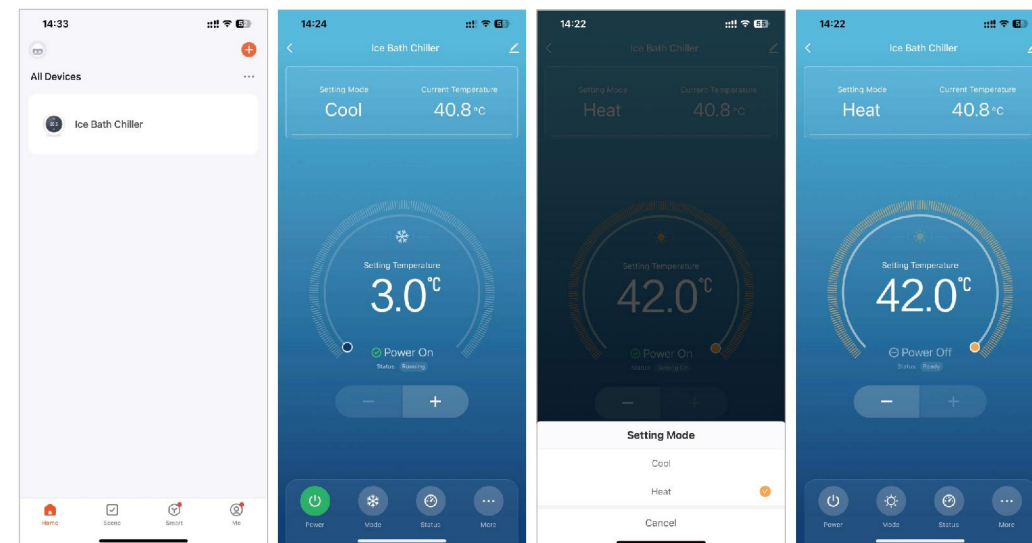


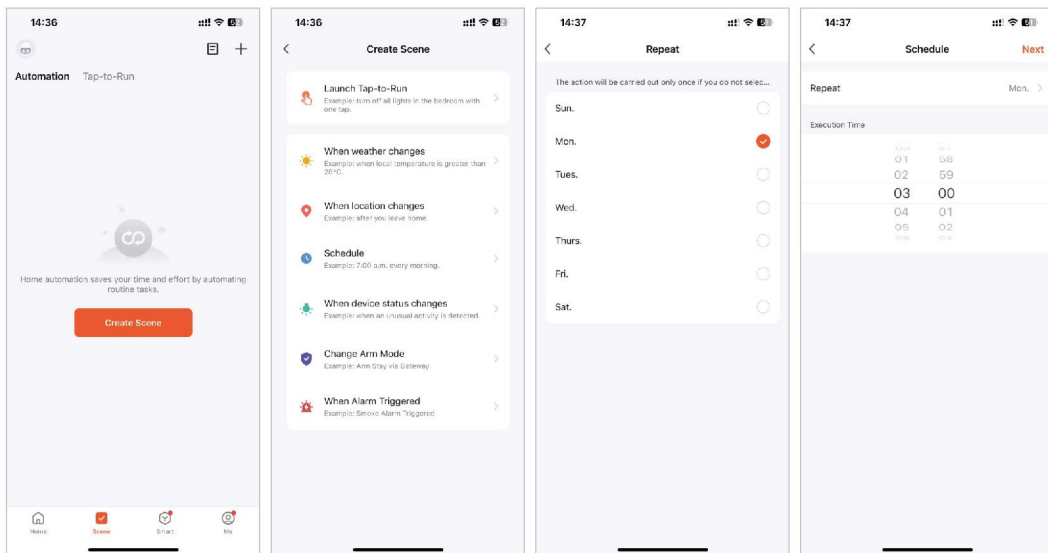




## 7 Add Device

Please scan the "Tuya Smart" code to download the software first, connect to my device and follow the following picture to operate. Click Ice Bath Chiller to enter the machine operation boot page, click Power to switch on and off, click Mode to switch refrigeration/heating, return to the main page, click Scene and then click Create Scene, and then click Schedule to select the time to start refrigeration/heating.





## Cleaning and Maintenance

- 1) After every time use, the internal water of the machine needs to be drained, drain the residual water from the water inlet hole by tilting it, especially in winter, after each time use, it must be drained to prevent the internal water storage from being frozen and cracked.
- 2) The filter element needs to be cleaned and replaced in time.
- 3) The continuous use cycle every 7 days 24 hours requires a period of rest for the chiller.

### WARNING

- 1) Risk of electric shock, can cause injury or death.
- 2) Disconnect all remote electric power supplies before servicing.
- 3) Use on single outlet circuit only.
- 4) Suitable for commercial or industrial use only.
- 5) Thermally protected.

### **FREEZE WARNING**

To avoid damage, do not place the device that has not been drained of water in a place where the ambient temperature is below freezing.